

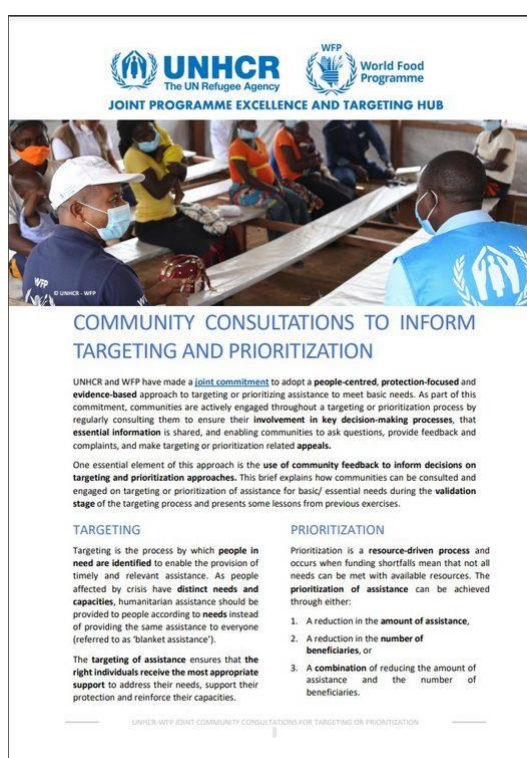


## New document on community consultations to inform targeting

Building on the [UNHCR-WFP Joint Guidance on Targeting](#), the Joint Hub has developed a new technical resource on conducting community consultations to inform targeting and prioritization exercises.

The document highlights **key considerations and learning** from the Joint Hub's experience of supporting community consultation exercises in Cameroon, Mauritania, Rwanda, and Uganda and focuses on the use of **community consultations during the validation stage** of a targeting or prioritization process.

[Read here](#)



## Joint Hub support in Mauritania



Read a recent **article** and watch the **video** on the Joint Hub's support to UNHCR-WFP joint work in Mauritania, featuring a Q&A with **Ziad Ayoubi**, UNHCR Deputy Representative, and **Paulo Oliveira**, WFP Deputy Country Director, who talk about the support provided by the Hub in Mauritania and reflect on progress so far. You can access the article and video via these links: [UNHCR intranet](#) / [WFP intranet](#).

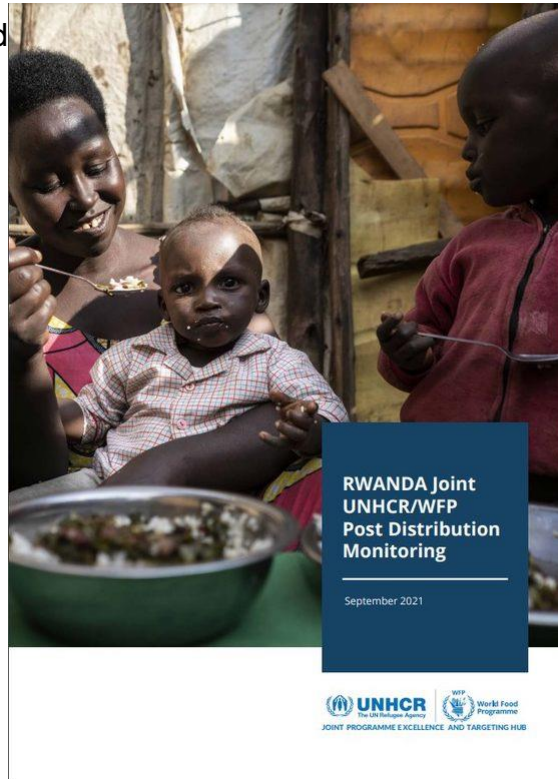


# Joint Monitoring of Targeting in Rwanda

In September 2021, a UNHCR-WFP Joint Post-Distribution Monitoring exercise was conducted five months after a **shift to needs based targeted food assistance** for refugees in Rwanda.

The report highlights the key findings from this joint monitoring exercise, including that **overall vulnerability among refugee households reduced** over a period of nine months, and that **food consumption remained the same**, with an increasing share of households found to have a **sufficient economic capacity to meet their essential food and non-food needs** using their own resources.

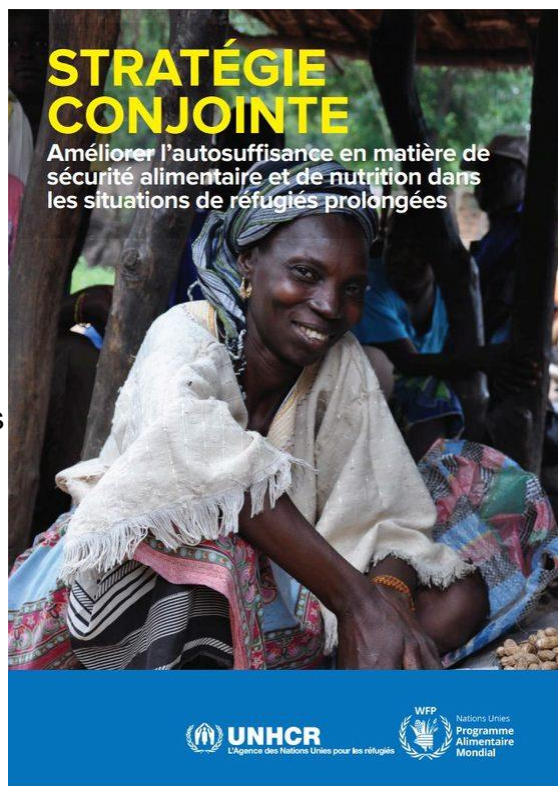
[Read more here](#)



## Cadres globaux HCR-PAM traduits en français

Le Joint Hub a soutenu la traduction en français des principaux cadres mondiaux du HCR et du PAM : i) les orientations conjointes pour le ciblage de l'assistance afin de répondre aux besoins essentiels, ii) la stratégie conjointe pour améliorer l'autosuffisance en matière de sécurité alimentaire et de nutrition, et iii) le partage de données.

[Accéder ici](#)



## UNHCR-WFP Joint Targeting Training

UNHCR and WFP have launched two training courses on the [UNHCR-WFP Joint Targeting Guidance](#), facilitated by the [Joint Hub](#). The training course, **Fundamentals of UNHCR-WFP Joint Targeting** is available to all staff in UNHCR and WFP from the links below.

**UNHCR**  
Access the training on  
**Learn & Connect**

**WFP**  
Access the training on  
**WeLearn**

For colleagues wishing for more in-depth knowledge to be able to actively engage in the targeting process in refugee settings, the course **Applying the UNHCR-WFP Joint Targeting Guidance** provides a comprehensive overview. More information on the training courses can be found [here](#).

# UNHCR-WFP Corporate Approaches to Livelihoods and Self-Reliance Programming

The Joint Hub has developed four brief resource documents that provide an overview of UNHCR and WFP approaches to livelihoods and self-reliance programming in refugee and displacement settings. You can [access the documents here](#).

## Joint Hub annual report and lessons on UNHCR-WFP collaboration in Hub supported countries

In late 2021, a series of stocktaking discussions were held with Joint Hub supported countries to reflect on successes, challenges, and ways forward for UNHCR-WFP collaboration. These [lessons on UNHCR-WFP collaboration in Hub supported countries can be read here](#). To find out more about the Joint Hub's activities in 2021, you can find [read the Joint Hub Annual Report](#).

To get in touch with the Hub team or to be added to the newsletter mailing list, you can email us at

[WFP.UNHCR.hub@wfp.org](mailto:WFP.UNHCR.hub@wfp.org)

---